



# **Business Applications**

## **Team Computers Pvt. Ltd.**

**BU Head : Pranab Paul**

September 2017



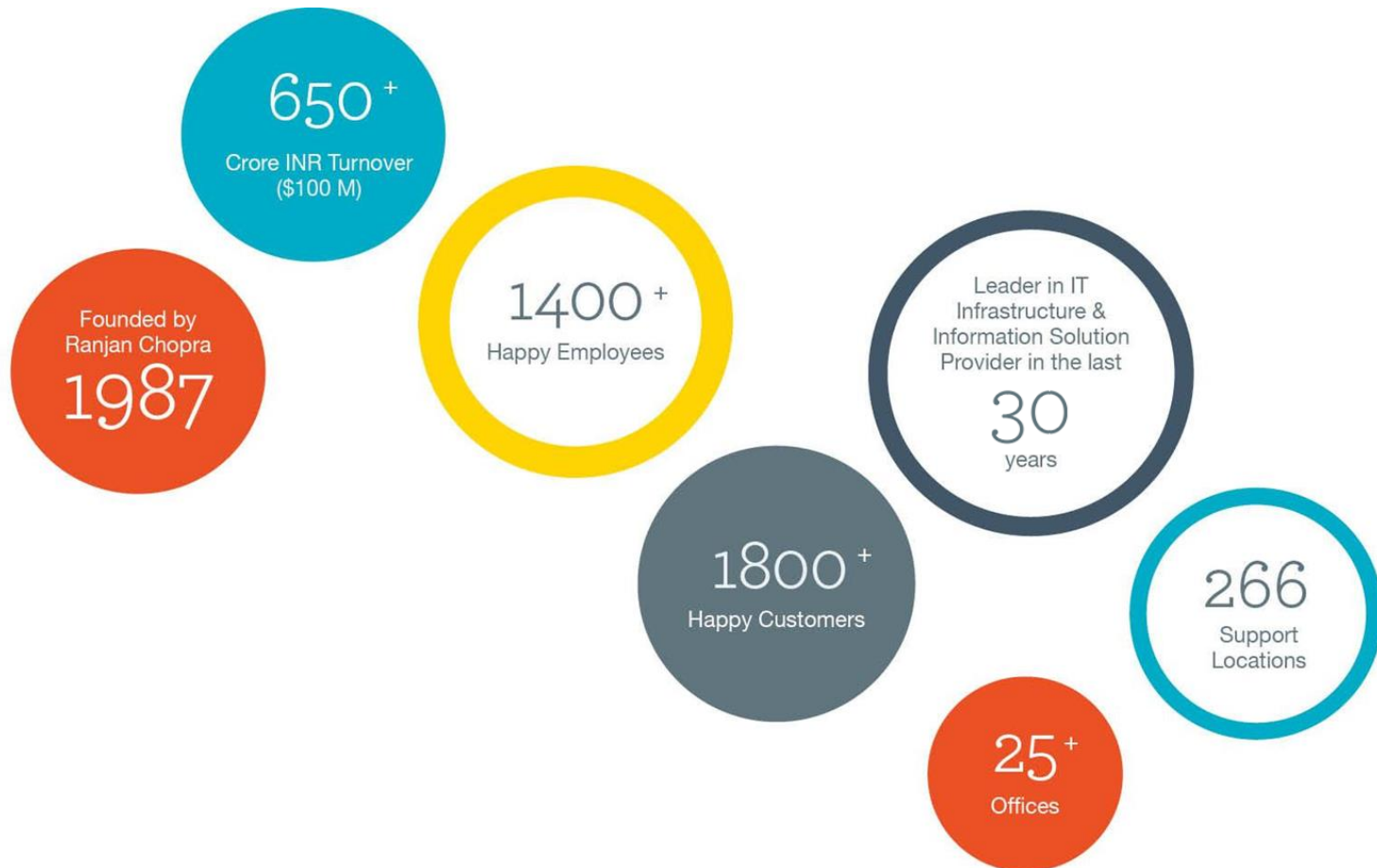
We are a Bridge

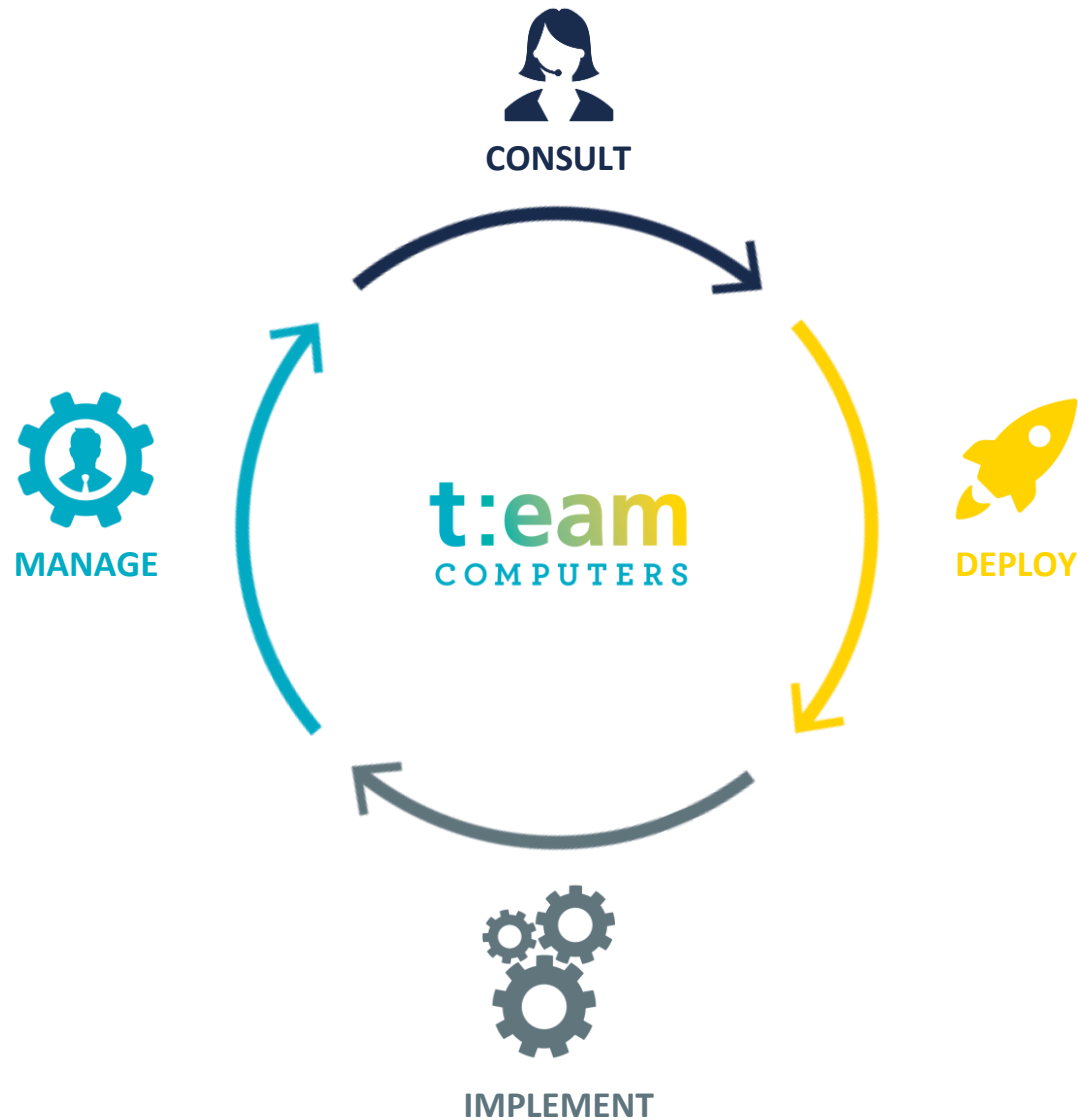
Needs

Solutions



# About Team Computers





# Business Units



INFRASTRUCTURE  
MANAGED SERVICES



INFRASTRUCTURE  
SOLUTIONS



GOOGLE  
SOLUTIONS



BUSINESS  
ANALYTICS



BUSINESS  
APPLICATIONS

# Business Application Services

## Implementation

- Industry Solution
- Process Optimization
- Rapid Implementation & Rollouts

## Development & Customization

- Development
- Customization & Integration
- Business Intelligence

## Upgrade & Migration

- Consulting
- Version upgrades & Legacy migration
- Remote Rollouts

## Support & Helpdesk

- L1, L2 & L3
- Technical & Functional
- Remote Management

## Clients:

**Springwel**  
healthcare life...

**CASIO**



Intellectual Property Attorneys





# Product Offerings



Microsoft Dynamics™ NAV



Microsoft®  
SharePoint®

# Dynamics NAV 2016 overview

## Office 365



Enhanced "in"  
Office 365 experience

Works natively with Power BI

## Azure



Enhanced "on"  
Azure experience

Works natively with Azure  
SQL

## Windows



Desktop, web, tablet  
and NOW phone

Usability enhancements

## CRM Online



Works natively with CRM  
Online

## e-Everything



Electronic invoicing

OCR

Ability for third parties  
to add in their own data  
sources (e.g., exchange  
rate lookup)

## Workflow



Enable process automation

Allows easy customization  
via events introduced into  
C/AL (business language)

## Functionality



Posting preview

Deferrals

Positive Pay (for U.S.)

## Engineering



Test automation suite  
available to partners

Releases every year,  
updates every month



# Service Offerings

## Implementation<sup>[L]</sup><sub>SEP</sub>

- Industry Solution.
- Process Optimization
- Rapid Implementation & Rollouts

## Upgrade & Migration

- Consulting
- Version upgrades & Legacy migration
- Remote Rollouts

## Development & Customization<sup>[L]</sup><sub>SEP</sub>

- Development
- Customization & Integration
- Business Intelligence

## Support & Helpdesk

- L1, L2 & L3
- Technical & Functional
- Remote Management

## Rich Business Doman & Industry experience

Certified Consultants & Project Managers

Change Managers

Process driven methodology

# HRMS Features

Resource  
Requisition

On-Boarding/  
Employee Profile

Attendance/ Leaves

Daily Activity  
Report/ Timesheet

Policies and  
Procedures

Task Management

Training

Performance  
Appraisal(PMS)

Travel &  
Reimbursement

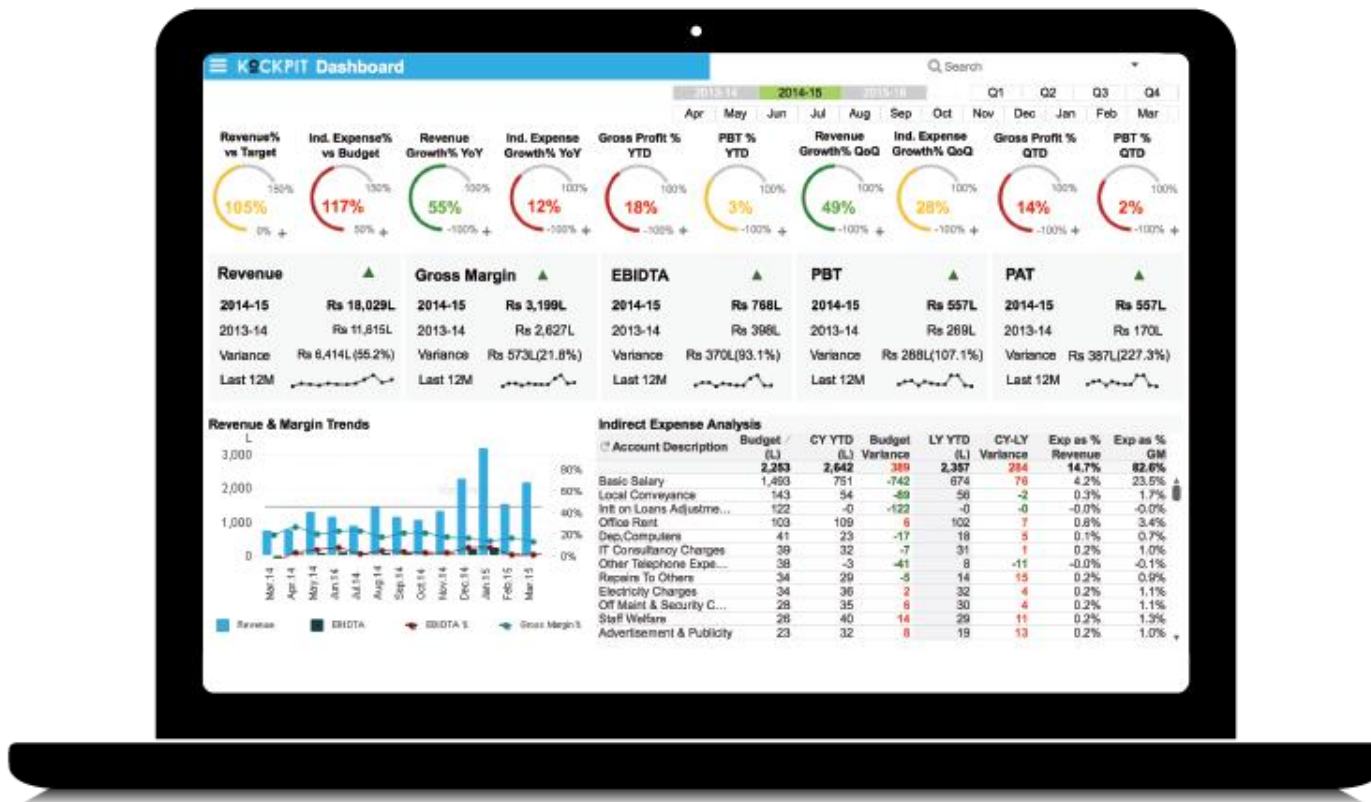
Conference Room  
Booking

Income Tax  
Declaration

Exit Process

# HRMS Overview





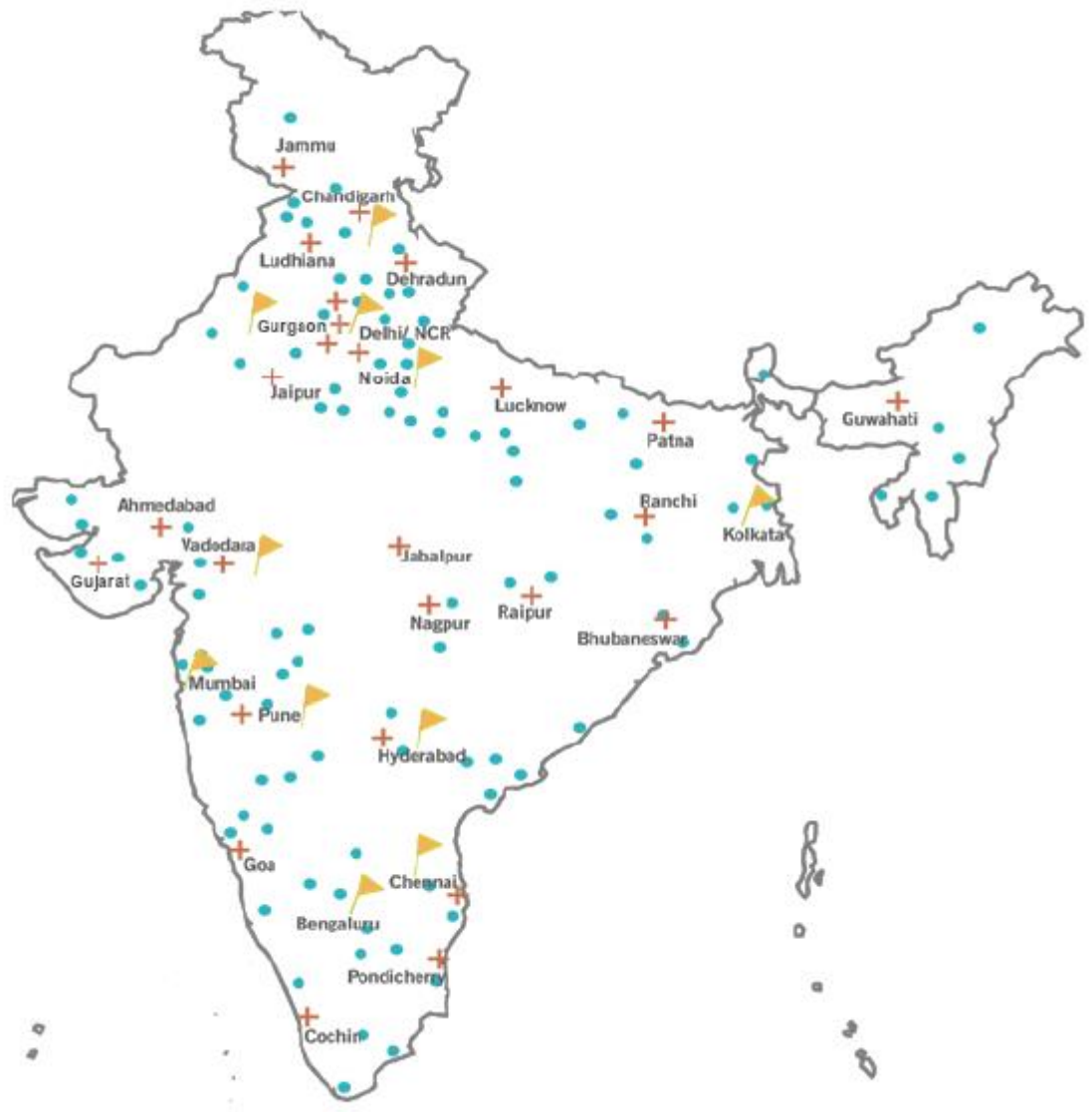
## Clients:



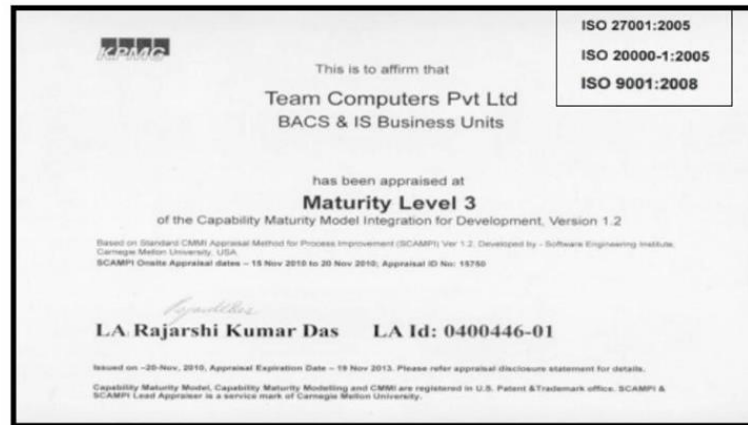


We serve across  
the country

- 11 Regional Offices 
- 25 Office and Support Locations 
- 250+ Support Locations 



# Our Processes



ISO 27001:2005  
ISO 20000-1:2005  
ISO 9001:2008





Thank you

**t:eam**  
COMPUTERS